

# Portuguese Civil Protection

Abel Gomes

principles

*priority*

*prevention*

*precaution*

*subsidiarity*

*cooperation*

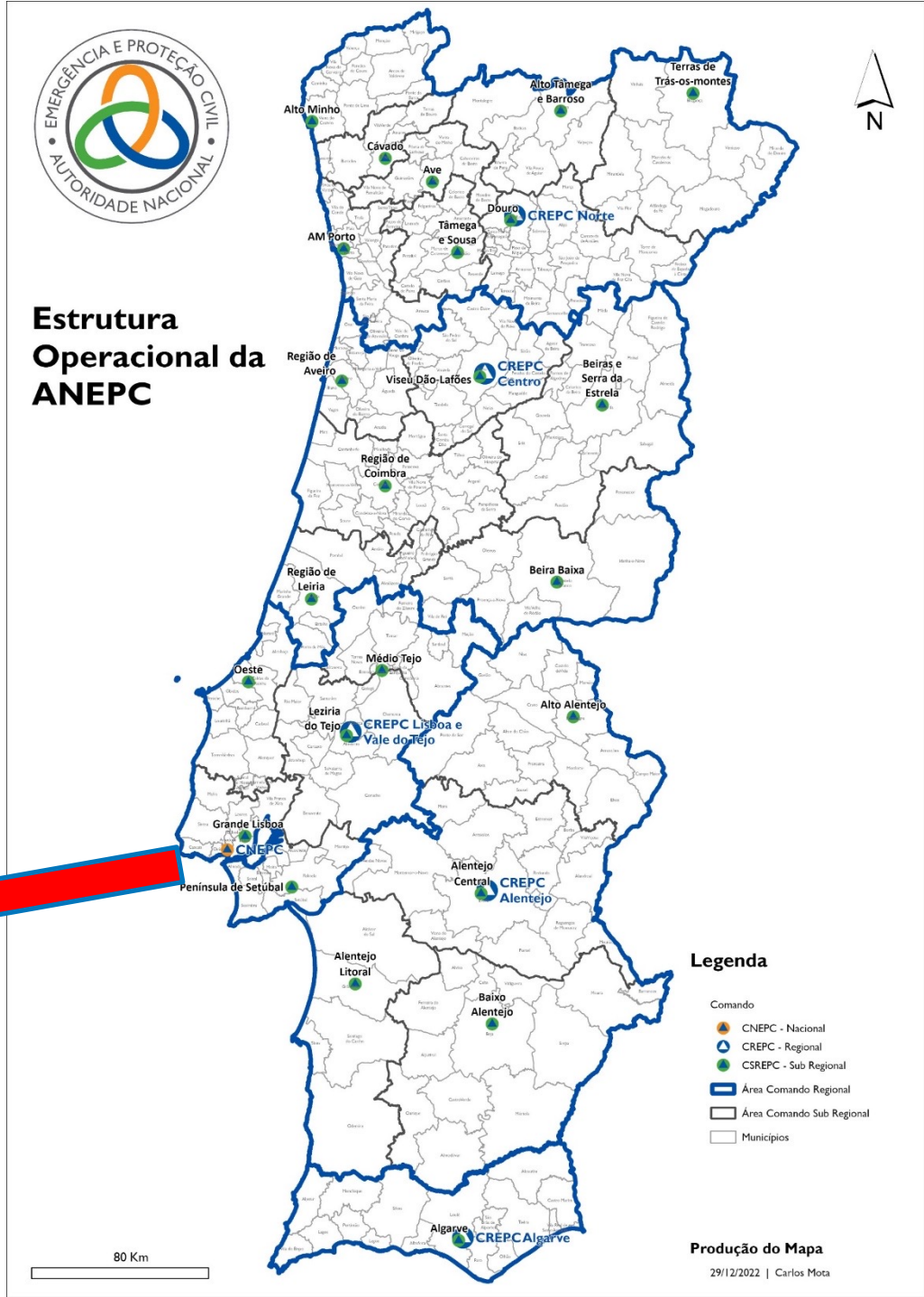
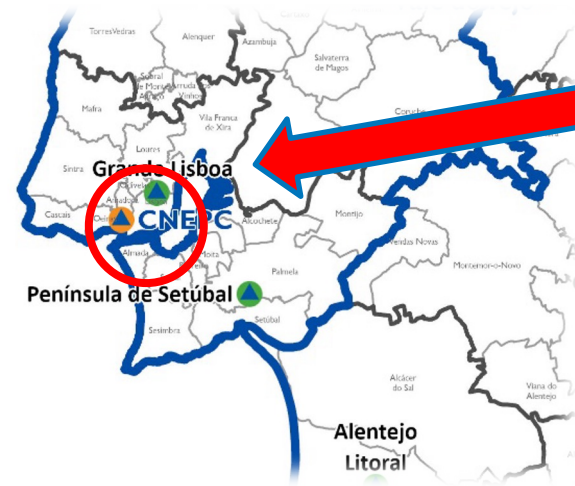
*coordination*

*unique*

*information*

Understood as an activity carried out by the State, by the Regions, by the local authorities, by every citizen and by public and private companies, with the aim of preventing collective risks associated with accidents, emergencies and disasters, attenuating its effects, protecting people and the environment and assisting those in danger.

national authority



national authority

5

Regional commands

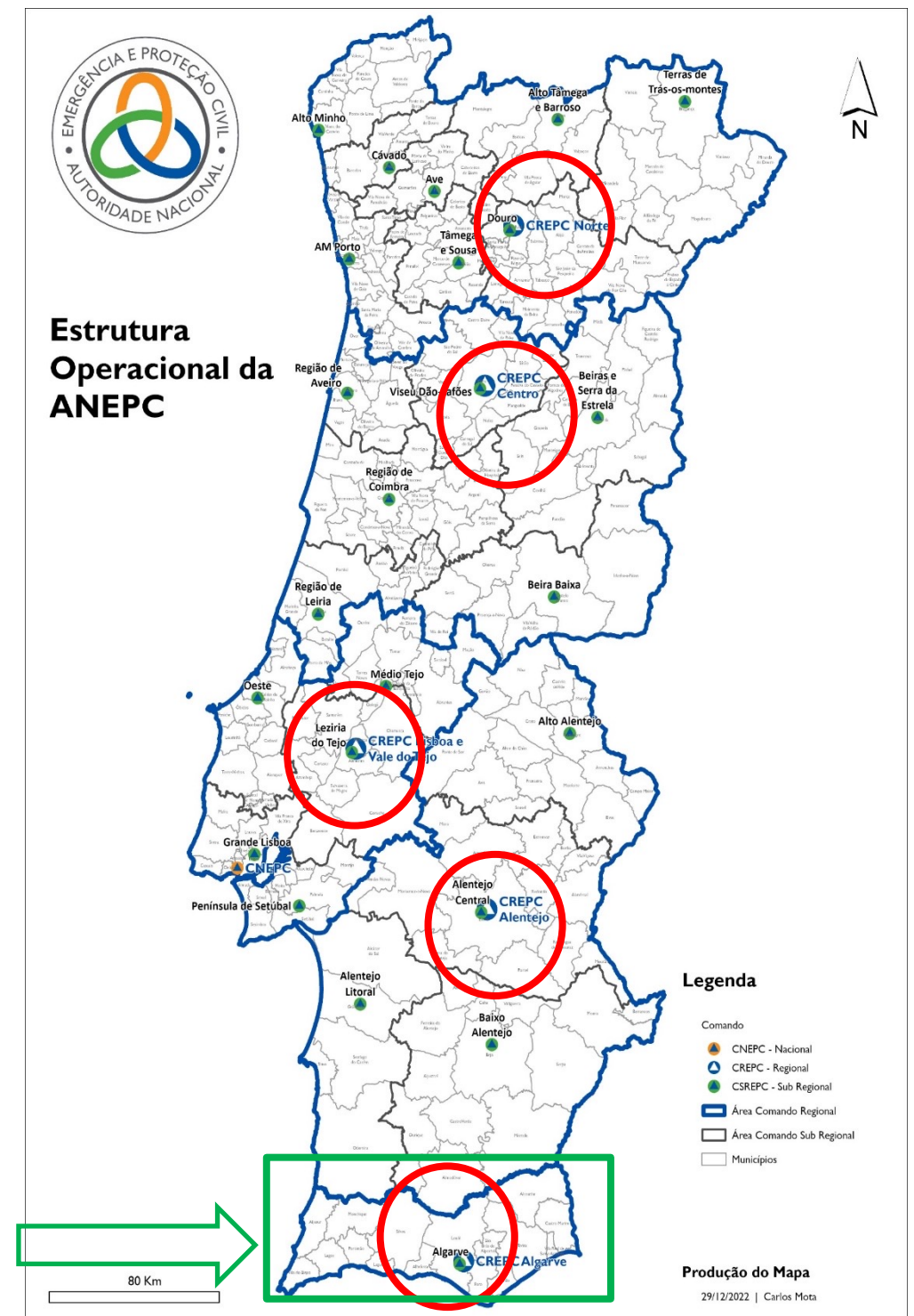
Norte

Centro

Lisboa e Vale do Tejo

Alentejo

Algarve

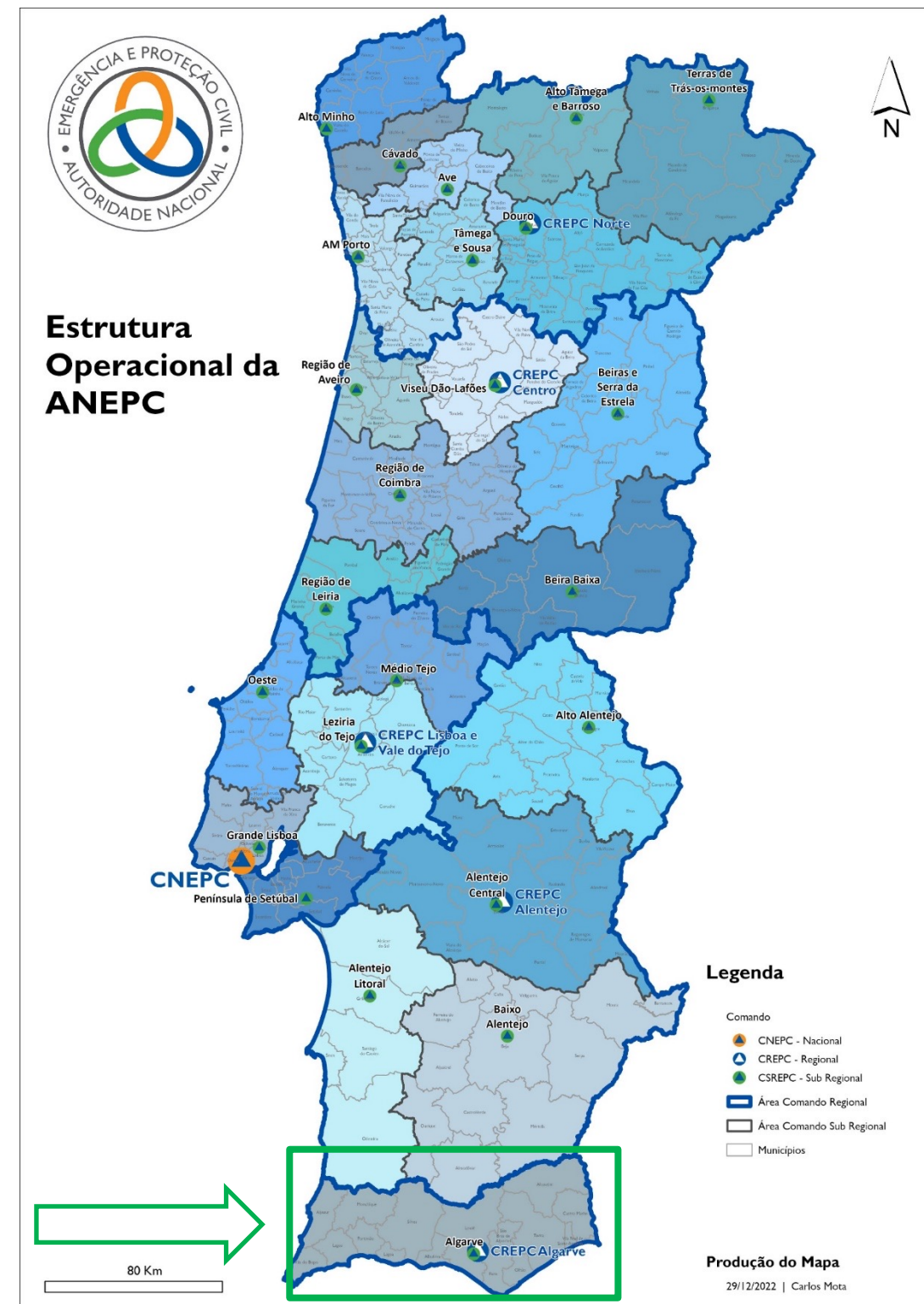




national authority

24 Sub-regional commands

the area of responsibility of the Algarve regional and sub-regional commands is the same



**an integrated system**  
with well defined structures

## Coordination Structures

- Ad-hoc structures (only work when needed)
- It includes political representatives and all Civil Protection Agents and other relevant institutions

## Political Coordination



## Operational Coordination



# an integrated system

with well defined structures

## Command Structures

- Permanent Structures 24/7
- Responsible to guarantee the necessary actions towards the occurrence of serious accidents or disasters, in coordination with all other relevant institutions





## Command Structures





# Command structures permanently assures



## Information

- the information, on a permanent basis, to the political level on all events which may generate a civil protection situation.

# Command structures permanently assures



## Monitoring

- the monitoring of all civil protection situations in order to guarantee the most adequate actions and a timely mobilization of the most adequate means.

# daily briefings for situation assessment

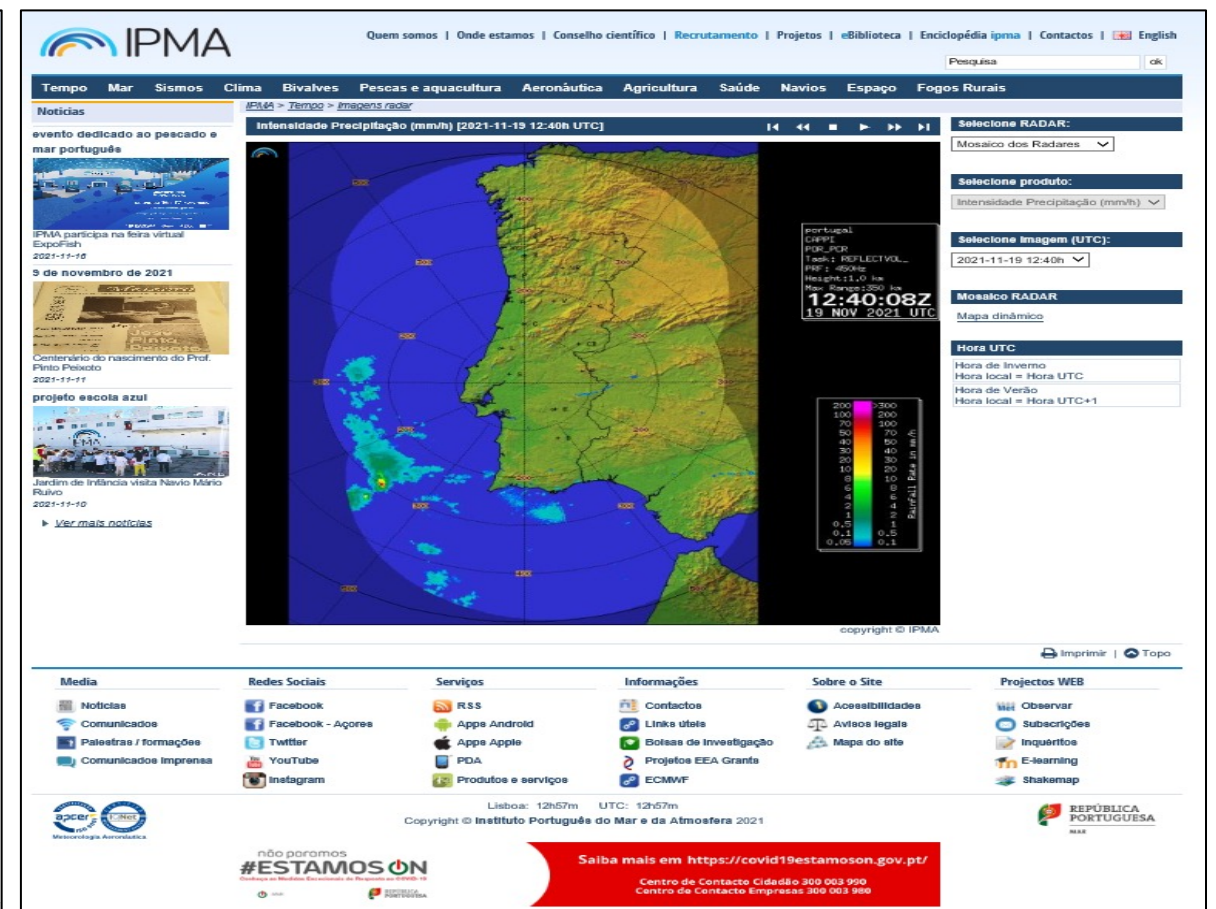
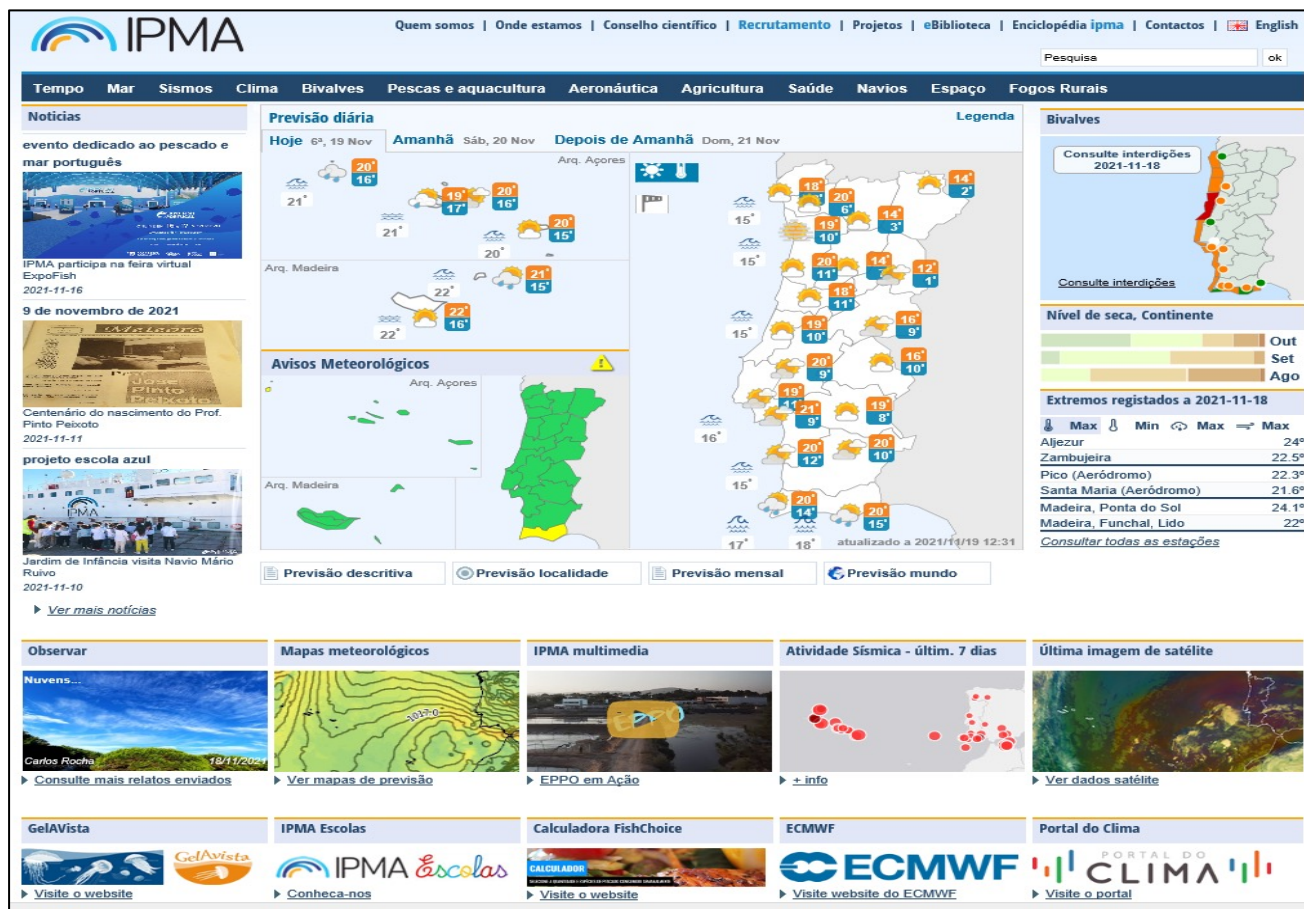


Crucial procedure to guarantee that all relevant departments and entities have a common operational picture, gathering experts and liaison officers from other civil protection agents.



# Portuguese Institute for Sea and Atmosphere (IPMA)

## Weather Information (IPMA) – public access



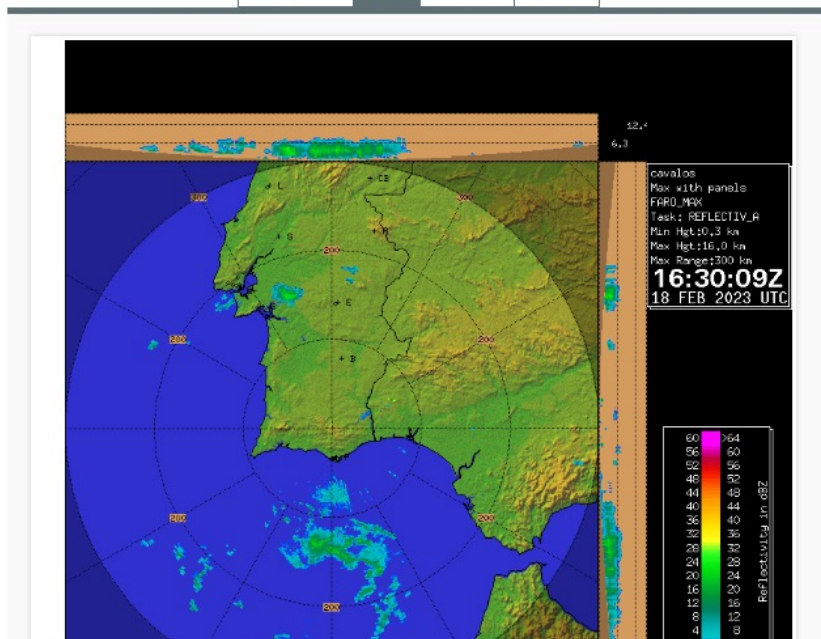
# Portuguese Institute for Sea and Atmosphere (IPMA)

## Weather Information (IPMA) Civil Protection (special access)



RADAR

Composito Faro Coruche Arouca



[Log In](#)

- 1 - OBSERVAÇÃO
  - 1.1 Superfície
    - Resumo diário
    - Resumo horário
    - Coordenadas Estações
  - 1.2 Radar
  - 1.3 Satélite
  - 1.4 Descargas Eléctricas
- 2 - PREVISÃO METEOROLÓGICA
  - 2.1 Simbólica
  - 2.2 Boletins
  - 2.3 Cartas Prognóstico
    - AROME
      - 00UTC
      - 12UTC
    - ECMWF
      - 00UTC
      - 12UTC
  - 2.4 Tefigramas
    - 00UTC
    - 12UTC
  - 2.5 Meteogramas
    - AROME/ECMWF Determinísticos
    - ECMWF Determinístico - Zonas ANEPC
    - ECMWF probabilístico
  - 2.6 Previsões Longo Prazo
    - Mensal
      - Copernicus
      - ECMWF

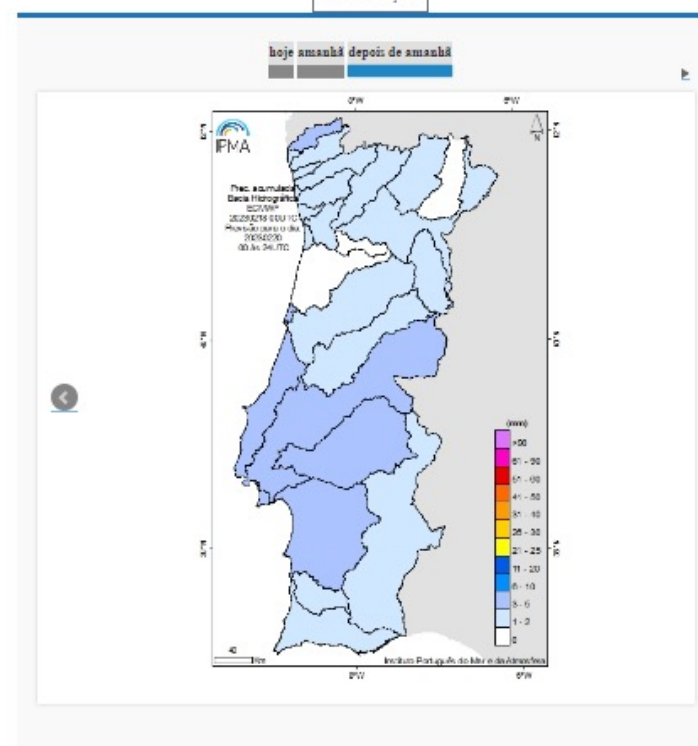


Bacias Hidrográficas

Previsão de Precipitação acumulada em 24 horas

Observação da Precipitação acumulada em 24 horas Precipitação acumulada em 72 horas

Identificação

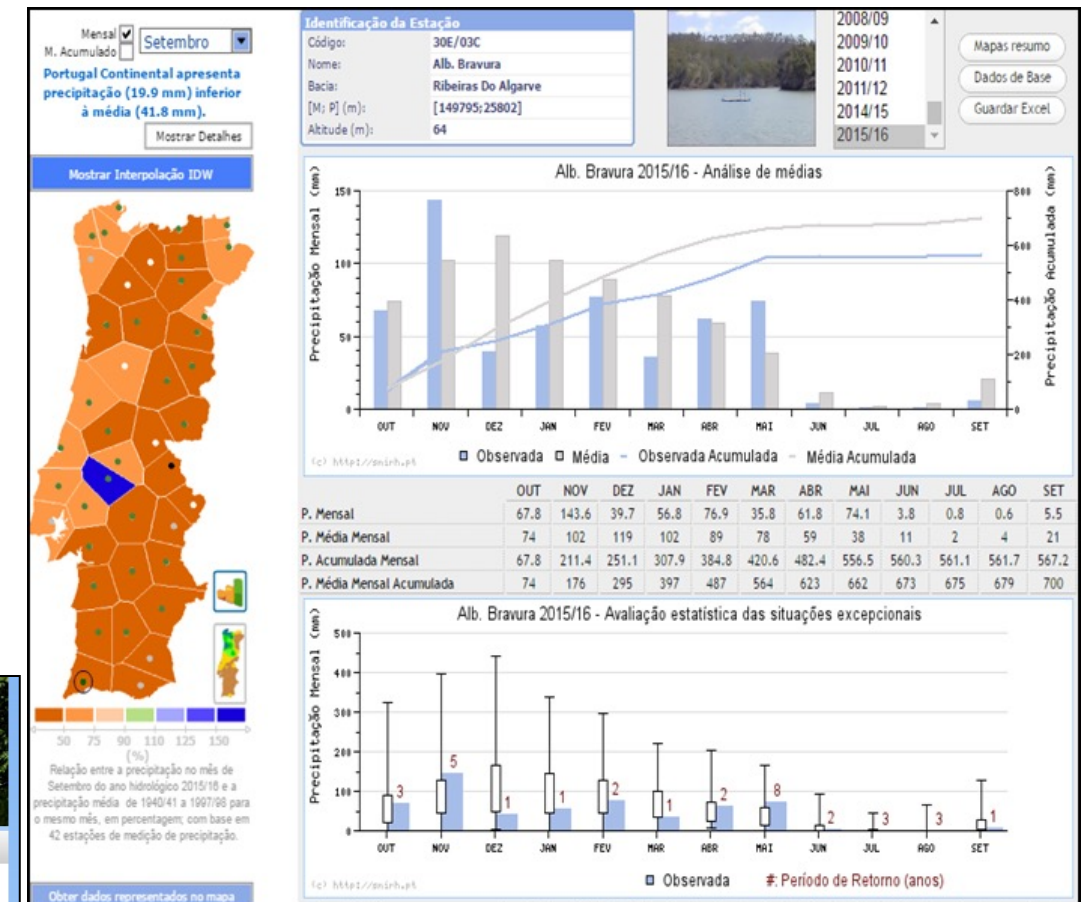
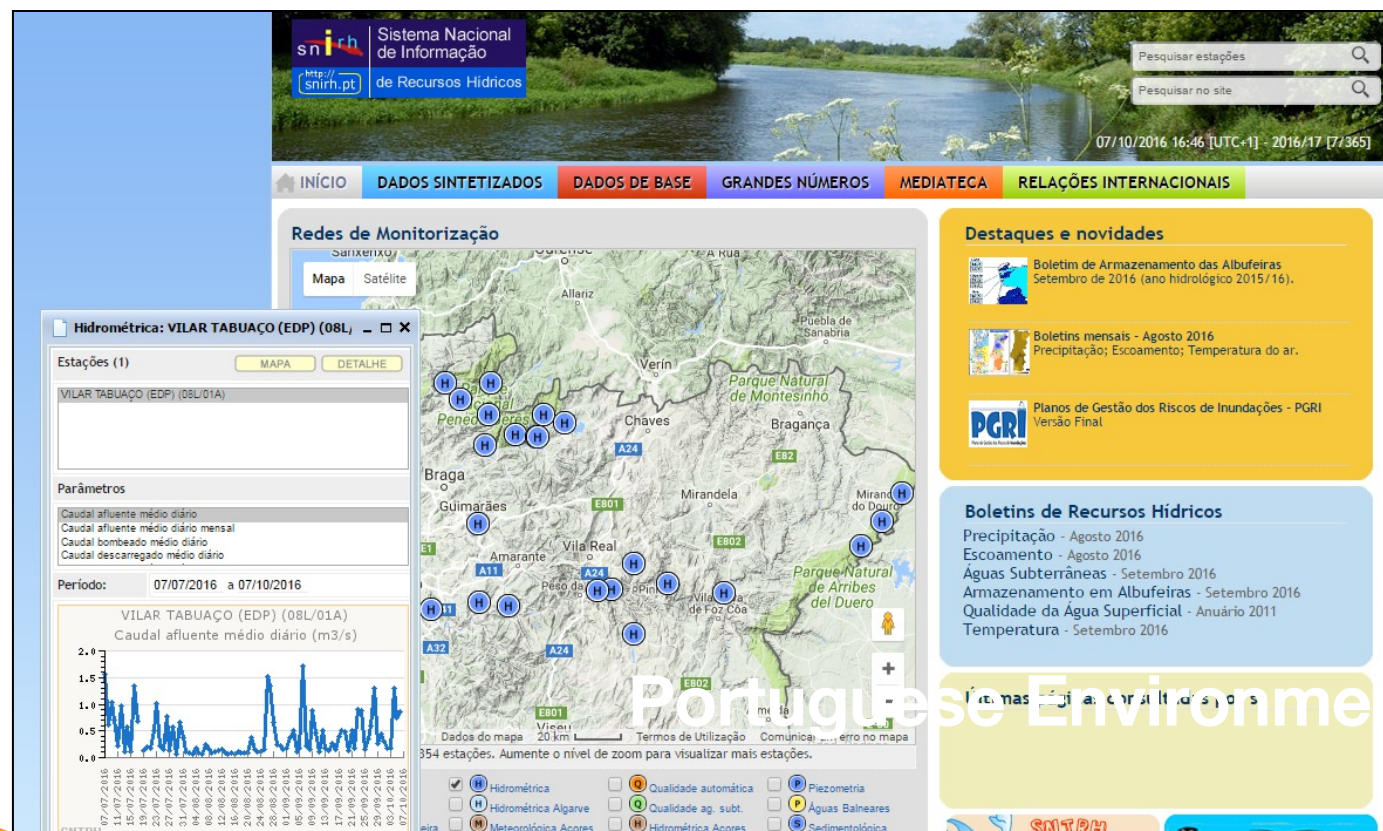


[Log In](#)

- 1 - OBSERVAÇÃO
  - 1.1 Superfície
    - Resumo diário
    - Resumo horário
    - Coordenadas Estações
  - 1.2 Radar
  - 1.3 Satélite
  - 1.4 Descargas Eléctricas
- 2 - PREVISÃO METEOROLÓGICA
  - 2.1 Simbólica
  - 2.2 Boletins
  - 2.3 Cartas Prognóstico
    - AROME
      - 00UTC
      - 12UTC
    - ECMWF
      - 00UTC
      - 12UTC
  - 2.4 Tefigramas
    - 00UTC
    - 12UTC
  - 2.5 Meteogramas
    - AROME/ECMWF Determinísticos
    - ECMWF Determinístico - Zonas ANEPC
    - ECMWF probabilístico
  - 2.6 Previsões Longo Prazo
    - Mensal
      - Copernicus
      - ECMWF
    - Semanal
  - 2.7 Previsão Regionalizada
- 3 - AVISOS
  - 4 - RISCO INCÊNDIO
    - 4.1 RCM & IOT (Distrito)
    - 4.2 FWI, RCM & IOT (Concelho)
    - 4.3 FWI+, RCM & ICRIF (Estação)
    - 4.3 FWI+, RCM & ICRIF (Estação - sem interpolação)
    - 4.4 FWI+ & FRM (satélite)
    - 4.5 HCV e DC
    - 4.6 FWI+ Probabilístico
    - 4.7 Hotspots
    - 4.8 Instabilidade Atmosférica
      - 00
      - 12
    - 4.9 Monitorização



# Floods



# Portuguese Civil Protection