

CP Platforms to support Emergency Management National Level DGPCE

NEEDS FROM EU COMMISSION



COMMISSION REPORT (COM(2024)130)

Stocktaking on progress on article 6 components, including on peer reviews, DRGs.

Key **conclusions based on national reports** on disaster risk management:

1. Understanding and anticipating risk
2. Improving risk governance
3. Mainstreaming and investing in disaster risk management

Recommendations for further actions

Relevant recent other policy developments

Recommendations - Article 6 implementation

Commission

- Promote peer reviews
- Analyse activations for article 6.4
- Encourage more systematic use of EU funds
- Stronger cross sectoral approaches for investment

Commission & MS/PS

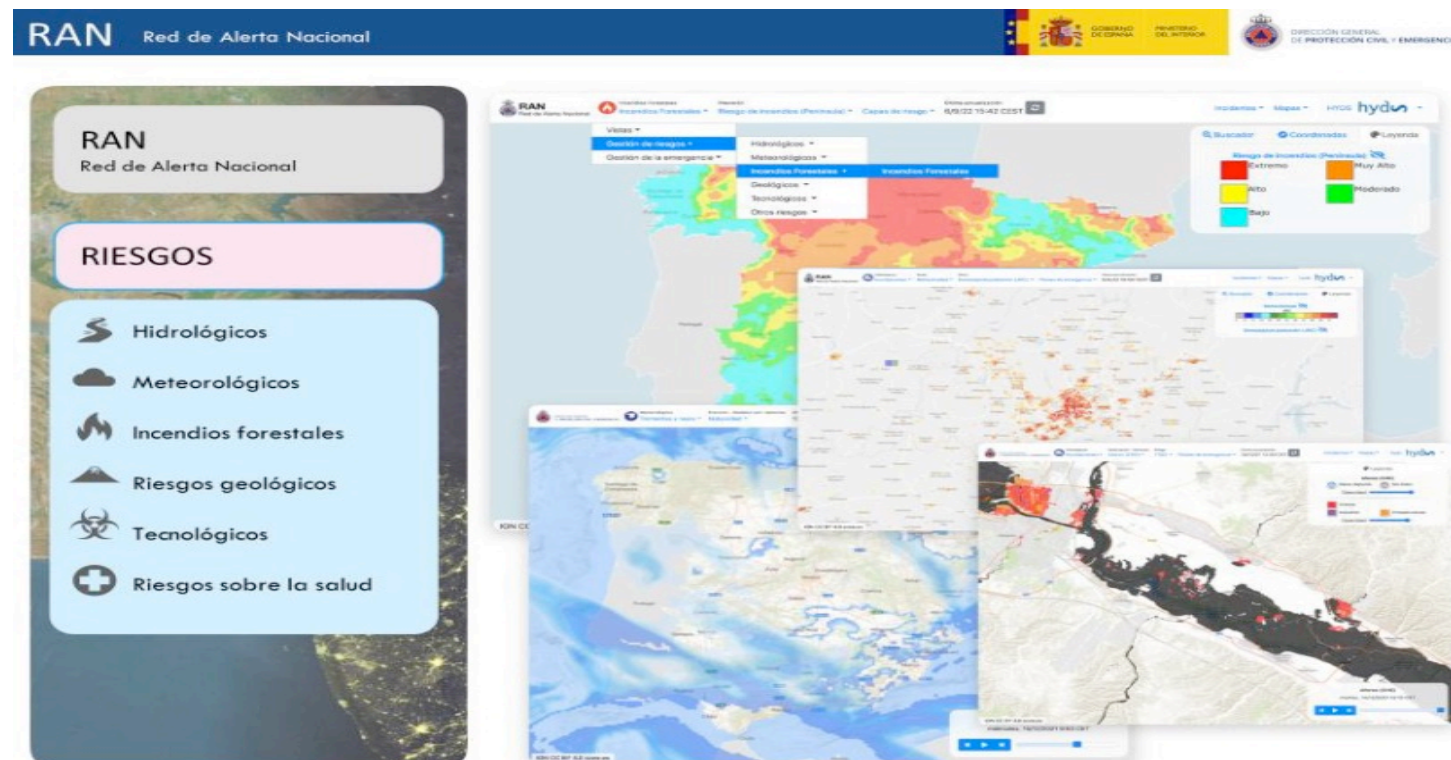
- Revise reporting guidelines (2019)
- **Fullfil DRGs**
- Improve loss data
- Revise risk assessment guidelines(2010)
- Increase knowledge exchange (Knowledge Network) : risk assessment, governance
- **Early warning systems, link national/EU level**

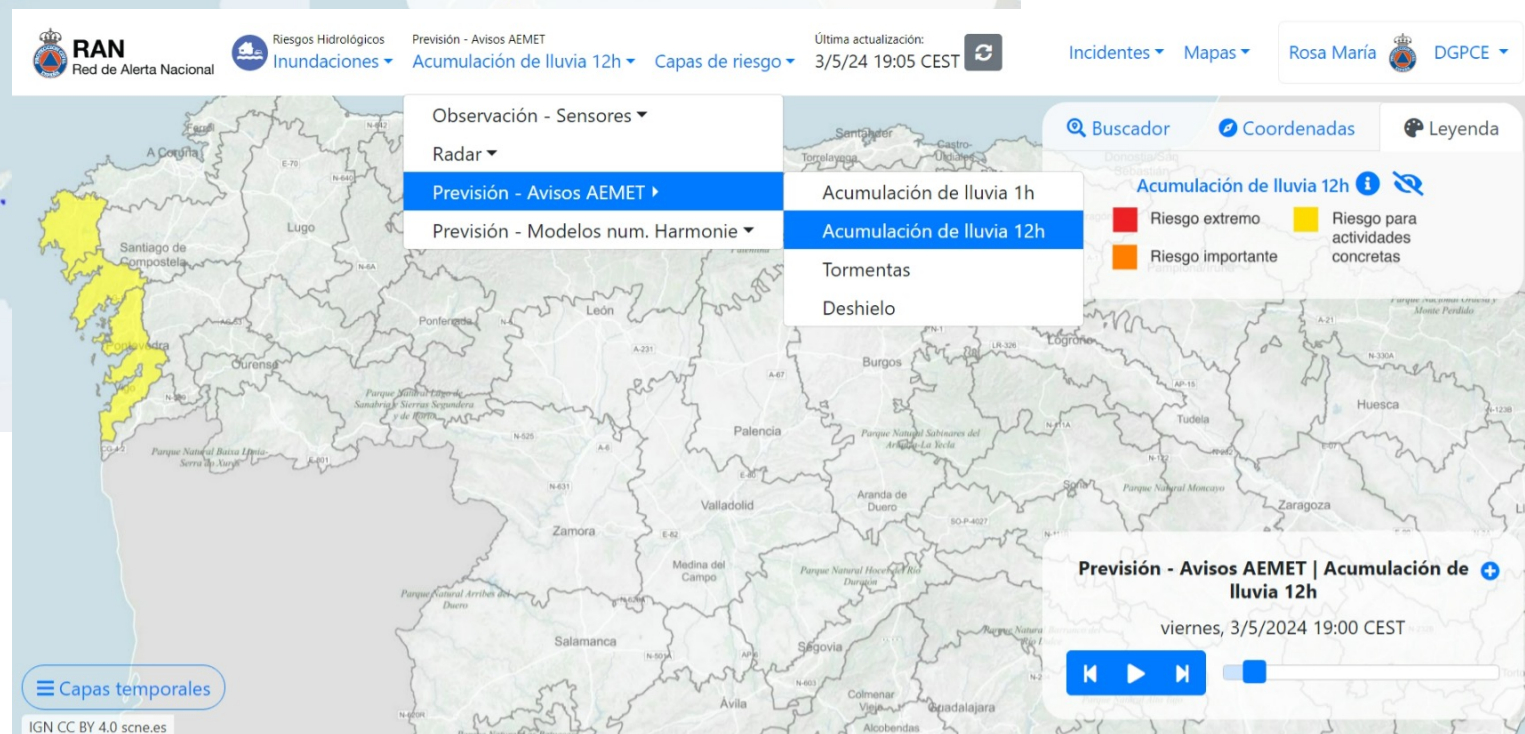
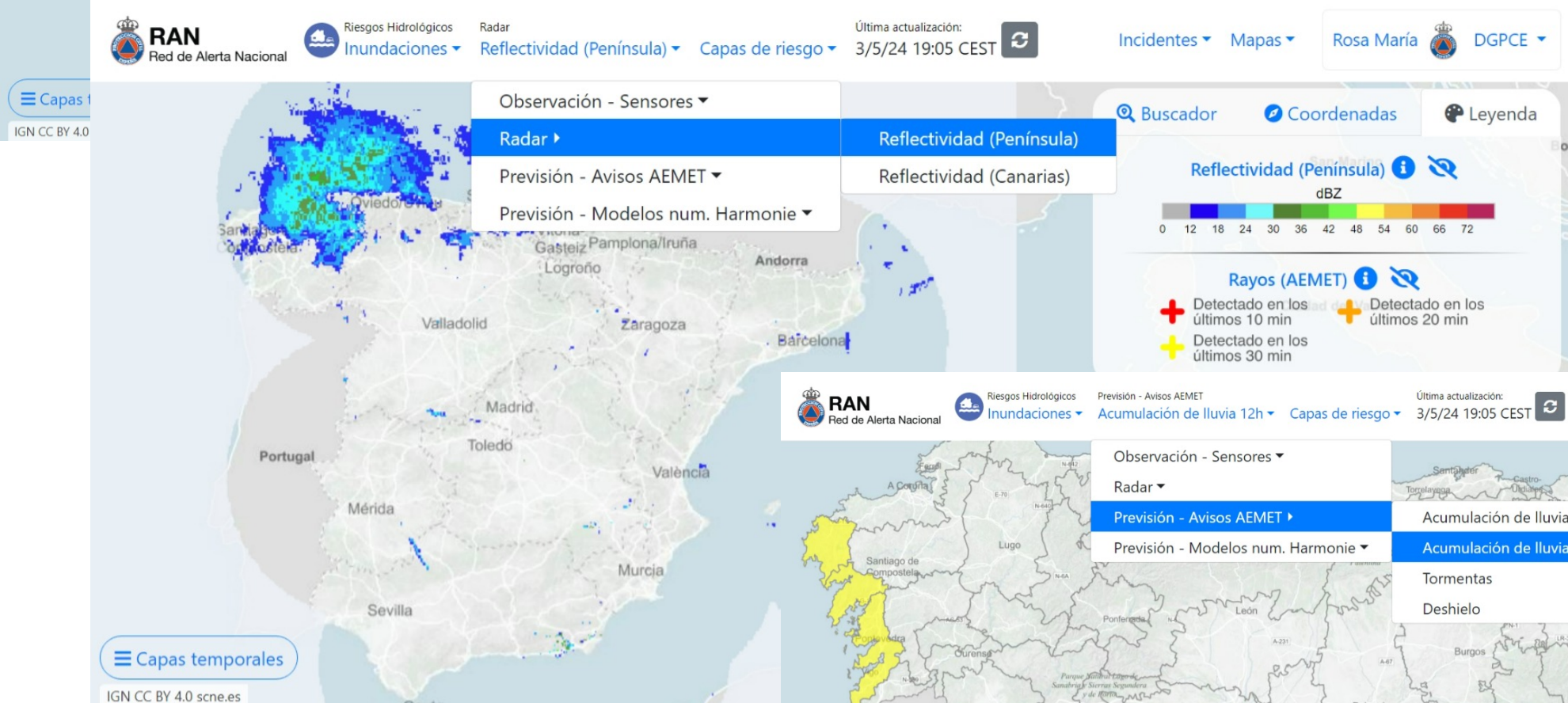
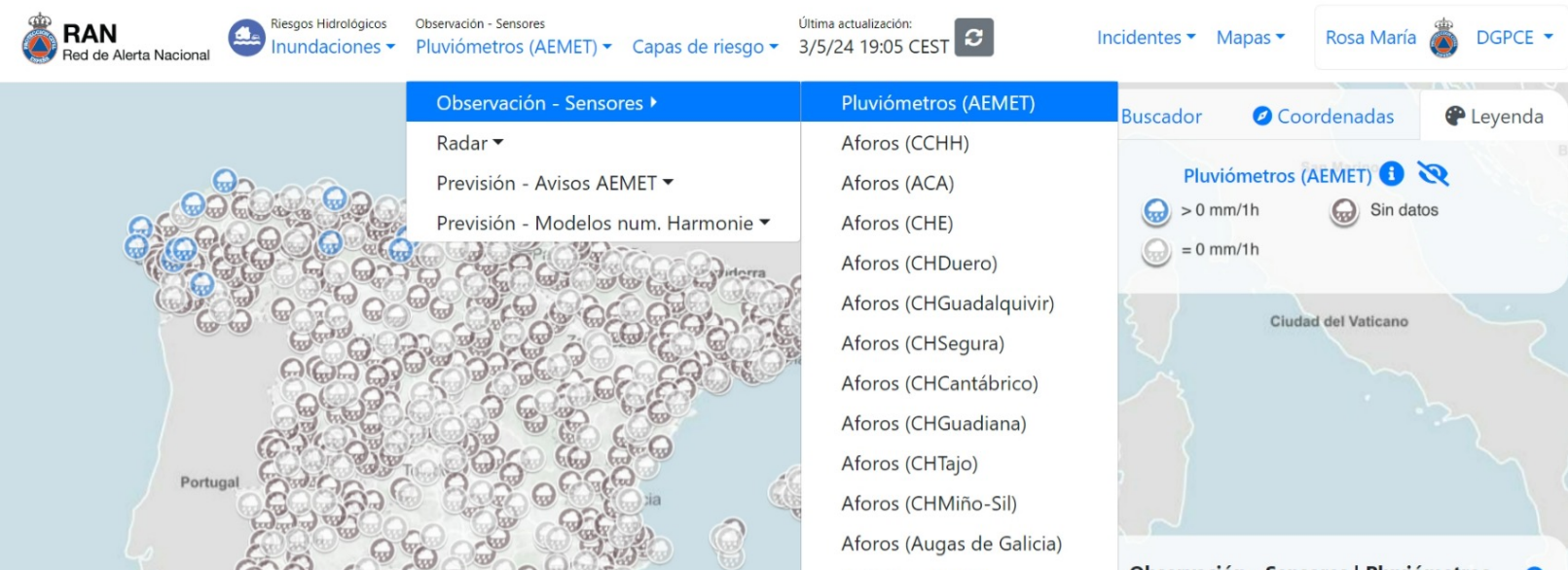
MS/PS (at national level)

- **Improve anticipation of risks**
- Better consideration long-term risk perspectives, including climate change
- Cross-sectoral synergies & all of society approach
- Loss data
- Strengthen risk management planning
- **Improve coverage of early warning systems**
- **Vulnerable groups considerations**
- "Holistic" approach to funding
- Increase disaster risk reduction and adaptation funding

NATIONAL CIVIL PROTECTION PLATFORM: RAN

- The RAN emerges as a mandatory included in art. 12 of 7/2015 Law of National System of Civil Protection.
- The RAN has been designed as a system for integrating and managing relevant information on risks for Civil Protection purposes, which allows its treatment and transmission to the competent authorities in each case.
- The RAN also integrates the ES-Alert system, whose purpose is to send alerts to the population that is in affected areas or that is expected to be affected in situations of serious emergencies. This system is based on sending civil protection alerts through mobile devices.
- The RAN is interrelated to the National Information Network (RENAIN), thus being able to access the different products that compose it, such as risk maps, plan catalog, etc.





Observación - Sensores

Radar

Previsión - Avisos AEMET

Previsión - Modelos num. Harmonie

Precipitación (Península)

Precipitación (Canarias)

Acumulación de lluvia 1h (Península)

Acumulación de lluvia 1h (Canarias)

Buscador

Coordenadas

Leyenda

Precipitación (Mod. Num. Harmonie)

mm

2 5 10 20 30 40 60 80 100 120 180 250 300

Observación - Sensores

Radar

Previsión - Avisos AEMET

Previsión - Modelos num. Harmonie

Precipitación (Península)

Precipitación (Canarias)

Acumulación de lluvia 1h (Península)

Acumulación de lluvia 1h (Canarias)

Buscador

Coordenadas

Leyenda

Acumulación de lluvia 1h (Mod. Num. Har...

mm

2 5 10 20 30 40 60 80 100 120 180 250 300

Capas temporales

IGN CC BY 4.0 scne.es

Capas temporales

IGN CC BY 4.0 scne.es

Cámaras de tráfico

CAMARA-CGT
CORUÑA_1463



Buscador

Coordenadas

Leyenda

Acumulación de lluvia 1h (Mod. Num. Har...

mm

0 0.5 1 2 5 10 20 30 40 60 80 100 120 180 250 300

Cámaras de tráfico

La Bañeza

Santa María del Páramo

Valencia de Don Juan

N-601

A-231

Verín

A-75

Lago de Segunda

Sanabria y de Páramo

Verín

A-75

Lago de Segunda

Sanabria y de Páramo

Verín

A-75

Lago de Segunda

Sanabria y de Páramo

Verín

A-75

Lago de Segunda

Sanabria y de Páramo

Verín

A-75

Lago de Segunda

Sanabria y de Páramo

Verín

A-75

Lago de Segunda

Sanabria y de Páramo

Verín

A-75

Lago de Segunda

Sanabria y de Páramo

Verín

A-75

Lago de Segunda

Sanabria y de Páramo

Verín

A-75

Lago de Segunda

Sanabria y de Páramo

Verín

A-75

Lago de Segunda

Sanabria y de Páramo

Verín

A-75

Lago de Segunda

Sanabria y de Páramo

Verín

A-75

Lago de Segunda

Sanabria y de Páramo

Verín

A-75

Lago de Segunda

Sanabria y de Páramo

Verín

A-75

Lago de Segunda

Sanabria y de Páramo

Verín

A-75

Lago de Segunda

Sanabria y de Páramo

Verín

A-75

Lago de Segunda

Sanabria y de Páramo

Verín

A-75

Lago de Segunda

Sanabria y de Páramo

Verín

A-75

Lago de Segunda

Sanabria y de Páramo

Verín

A-75

Lago de Segunda

Sanabria y de Páramo

Verín

A-75

Lago de Segunda

Sanabria y de Páramo

Verín

A-75

Lago de Segunda

Sanabria y de Páramo

Verín

A-75

Lago de Segunda

Sanabria y de Páramo

Verín

A-75

Lago de Segunda

Sanabria y de Páramo

Verín

A-75

Lago de Segunda

Sanabria y de Páramo

Verín

A-75

Lago de Segunda

Sanabria y de Páramo

Verín

A-75

Lago de Segunda

Sanabria y de Páramo

Verín

A-75

Lago de Segunda

Sanabria y de Páramo

Verín

A-75

Lago de Segunda

Sanabria y de Páramo

Verín

A-75

Lago de Segunda

Sanabria y de Páramo

Verín

A-75

Lago de Segunda

Sanabria y de Páramo

Verín

A-75

Lago de Segunda

Sanabria y de Páramo

Verín

A-75

Lago de Segunda

Sanabria y de Páramo

Verín

A-75

Lago de Segunda

Sanabria y de Páramo

Verín

A-75

Lago de Segunda

Sanabria y de Páramo

Verín

A-75

Lago de Segunda

Sanabria y de Páramo

Verín

A-75

Lago de Segunda

Sanabria y de Páramo

Verín

A-75

Lago de Segunda

Sanabria y de Páramo

Verín

A-75

Lago de Segunda

Sanabria y de Páramo

Verín

A-75

Lago de Segunda

Sanabria y de Páramo

Verín

A-75

Lago de Segunda

Sanabria y de Páramo

Verín

A-75

Lago de Segunda

Sanabria y de Páramo

Verín

A-75

Lago de Segunda

Sanabria y de Páramo

Verín

A-75

Lago de Segunda

Sanabria y de Páramo

Verín

A-75

Lago de Segunda

Sanabria y de Páramo

Verín

A-75

Lago de Segunda

Sanabria y de Páramo

Verín

A-75

Lago de Segunda

Sanabria y de Páramo

Verín

A-75

Lago de Segunda

Sanabria y de Páramo

Verín

A-75

Lago de Segunda

Sanabria y de Páramo

Verín

A-75

Lago de Segunda

Sanabria y de Páramo

Verín

A-75

Lago de Segunda

Sanabria y de Páramo

Verín

A-75

Lago de Segunda

Sanabria y de Páramo

Verín

A-75

Lago de Segunda

Sanabria y de Páramo

Verín

A-75

Lago de Segunda

Sanabria y de Páramo

Verín

A-75

Lago de Segunda

Sanabria y de Páramo

Verín

A-75

Lago de Segunda

Sanabria y de Páramo

Verín

A-75

Lago de Segunda

Sanabria y de Páramo

Verín

A-75

Lago de Segunda

Sanabria y de Páramo

Verín

A-75

Lago de Seg

IS EDERA PLATFORM USEFUL FOR RAN?? YES!!!!!!

- DGPCE/CENEM is the focal point between 24/7 112 management regional governments and EU (ERCC).
- Focal point for Copernicus activation,
- Galileo Emergency Warning Satellite Service
- **ARISTOTLE-eENHSP** activation.
- The decision making is based in reliable information to activate theses services.
- MAIN EDERA PRODUCTS:
 - Flash flood forecast summary
 - Flash flood impact layers:
 - Flash flood impact over sub-catchment and river network, pluvial flood hazard in urban areas
 - DON'T FORGET THE TRAINING VIDEOS



ARISTOTLE-eENHSP EMERGENCY REPORT (AR0137)

FLOODING IN ARLAND

MAIN DETAILS	
Area	Arland (Europe)
Event start	27 March 2024, 00:00 UTC
Event end	
Report created	27 March 2024, 11:23 UTC
Report finished	27 March 2024, 15:42 UTC

EXECUTIVE SUMMARY

- The storm Pato is dumping heavy rain on central Arland since 26 March and, according to the national weather service, precipitation is expected to intensify today.
- 550-700mm of precipitation are expected in the area during the next 24 hours, the predicted rainfall amounts are close to the annual total rainfall yield and at the same time approximately 10-15 times higher than the typical values during March (150-600mm).
- On the account of the thunderstorms that are expected to hit central and southern Arland, the local small sized catchments are likely to quickly respond, leading to the stage for widespread flash floods possibly occurring today and tomorrow.
- Local major rivers are forecasted to see a steep rise of water levels, exceeding by far the 1-in-20 year threshold by this evening/early tomorrow.
- The most affected river is the River A, River B, River C and River D.
- Floods are predicted to prevail in the main stem of the rivers in the coming 48 hours at least, having the potential to unleash extensive flooding in Region1 and Region2.
- Though there is significant uncertainty in the estimation of potentially-affected population, approximately 3,000 to 15,000 people might be at risk, mostly in Region1.

GEOGRAPHICAL LOCATION

ARLAND: 99.99N 99.99E

OVERALL IMPACT

Medium

LACK OF COPING CAPACITY

Arland VERY LOW (2.3)

ALERT LEVEL

Alert Level	High	Medium	Low
Required Resources	Sub-national	National	International